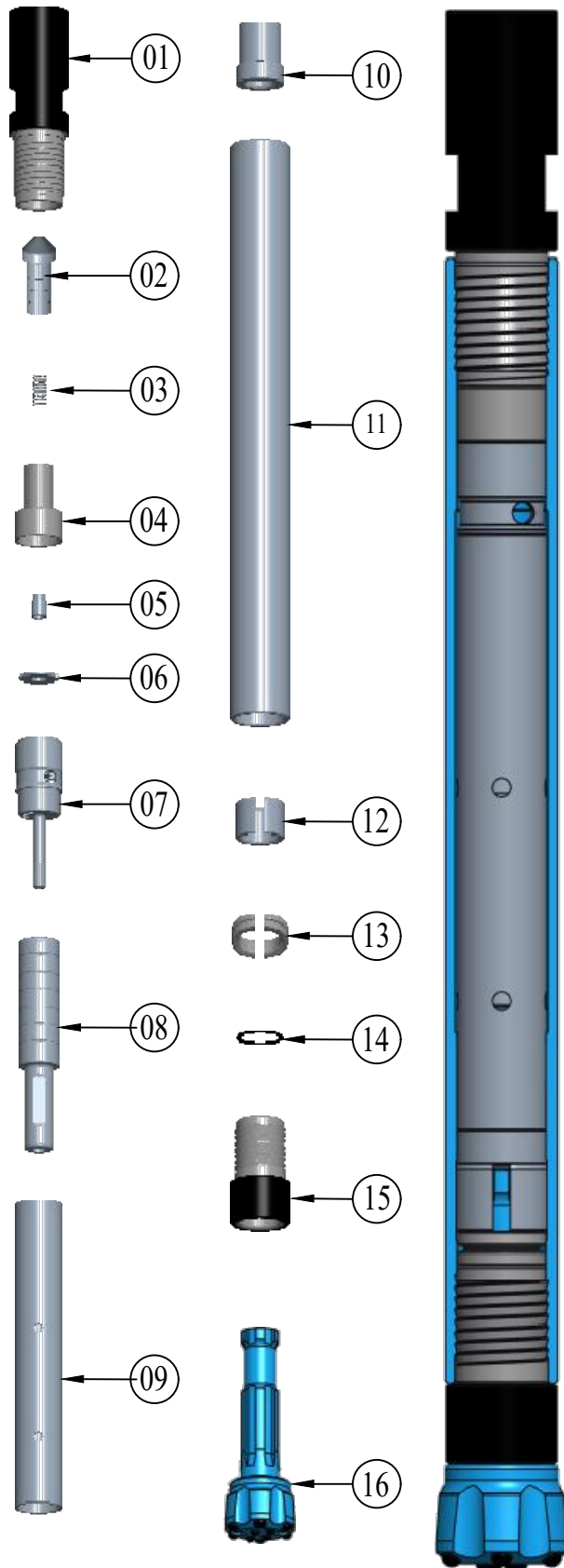


HAWK-2 DTH HAMMER EXPLODED & CROSS SECTIONAL VIEW



PART LIST

SI.NO.	DESCRIPTION	DRW.NO.
01	HAMMER COUPLER	01-B-H2-01
02	CHECK VALVE	01-B-H2-02
03	SPRING	01-B-H2-03
04	TOP VALVE	01-B-H2-04
05	METERING PLUG	01-B-H2-05
06	DISC VALVE	01-B-H2-06
07	LOWER VALVE	01-B-H2-07
08	PISTON	01-B-H2-08
09	LINER	01-B-H2-09
10	GUIDE BUSH	01-B-H2-10
11	HAMMER CASE	01-B-H2-11
12	RETAINER BUSH	01-B-H2-12
13	B.R.RING	01-B-H2-13
14	B.R.RING 'O' RING	01-B-H2-14
15	FRONT CHUCK	01-B-H2-15
16	BUTTON BIT	BR-2
17	HAMMER ASSEMBLY	01-B-H2-01-RDB-2

SPECIFICATIONS

01	HAMMER TYPE	VALVE TYPE
02	HAMMER DIA	Ø62.0mm
03	CYLINDER BORE	Ø42.8mm
04	STROKE	80.0mm
05	LENGTH WITH OUT BIT	810.0mm
06	WEIGHT WITHOUT BIT	13.0 Kgs
07	END CONNECTION	RD-50
08	WRENCH FLAT SIZE	A/F 47.5 mm / 32.0 mm Wide
09	DRILLING RANGE	Ø70.0mm - Ø80.0mm
10	SUITABLE BUTTON BIT	BR-2

AIR CONSUMPTION

PSI	100	150	200	250
CFM	75	135	205	270

NOTE:

TOP SUB TAPER THREAD CONNECTION SHALL BE PROVIDED AS PER CUSTOMER REQUIREMENT.

DUE TO CONTINUES PRODUCT DEVELOPMENT SPECIFICATIONS ARE SUBJECT TO CHANGE WITHOUT PRIOR NOTICE.