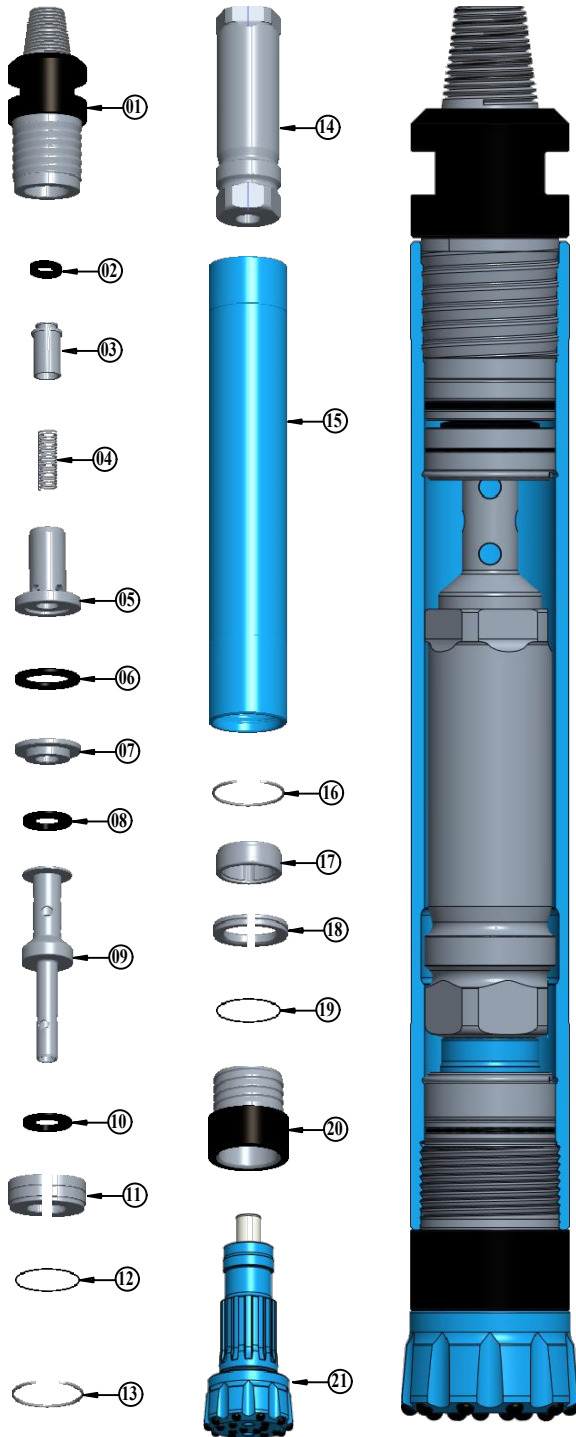




# BULL ROCK DRILLS PRIVATE LIMITED

Write to us @ Plot. No. 34, IDA, Phase I, HCL Post, Cherlapally, Hyderabad-500051, Telangana, India.  
Virtually introducing us @ <http://www.bullrockdrillspvtltd.co.in>

## MAVERICK-64 DTH HAMMER EXPLODED & CROSS SECTIONAL VIEW



### PART LIST

| SL.NO. | DESCRIPTION           | DRW.NO.          |
|--------|-----------------------|------------------|
| 01     | HAMMER COUPLER        | 01-B-M64-01      |
| 02     | CHECK VALVE SEAT      | 01-B-M64-02      |
| 03     | CHECK VALVE           | 01-B-M64-03      |
| 04     | SPRING                | 01-B-M64-04      |
| 05     | AIR DISTRIBUTOR       | 01-B-M64-05      |
| 06     | BUFFER RING           | 01-B-M64-06      |
| 07     | SPACER                | 01-B-M64-07      |
| 08     | CONTROL TUBE BUFFER   | 01-B-M64-08      |
| 09     | CONTROL TUBE          | 01-B-M64-09      |
| 10     | CONTROL TUBE BUFFER   | 01-B-M64-10      |
| 11     | CONTROL TUBE HOLDER   | 01-B-M64-11      |
| 12     | HOLDER 'O' RING       | 01-B-M64-12      |
| 13     | HOLDER RETAINING RING | 01-B-M64-13      |
| 14     | PISTON                | 01-B-M64-14      |
| 15     | HAMMER CASE           | 01-B-M64-15      |
| 16     | PISTON RETAINING RING | 01-B-M64-16      |
| 17     | GUIDE BUSH            | 01-B-M64-17      |
| 18     | B.R.RING              | 01-B-M64-18      |
| 19     | B.R.RING 'O' RING     | 01-B-M64-19      |
| 20     | FRONT CHUCK           | 01-B-M64-20      |
| 21     | BUTTON BIT            | QL-60            |
|        | HAMMER ASSEMBLY       | 01-B-M64-15-5P-1 |

### SPECIFICATIONS

|    |                     |  |
|----|---------------------|--|
| 01 | HAMMER TYPE         | VALVELESS                                |
| 02 | HAMMER DIA          | Ø146.0mm                                 |
| 03 | CYLINDER BORE       | Ø120.0mm                                 |
| 04 | STROKE              | 80.0mm                                   |
| 05 | LENGTH WITH OUT BIT | 1036.0mm                                 |
| 06 | WEIGHT WITHOUT BIT  | 98.0 Kgs                                 |
| 07 | END CONNECTION      | 2 3/8" API IF 4TPI / 3 1/2" API REG 5TPI |
| 08 | WRENCH FLAT SIZE    | 100.0mm                                  |
| 09 | DRILLING RANGE      | Ø165.0mm - Ø202.0mm                      |
| 10 | SUITABLE BUTTON BIT | QL-60 (WITH FOOT VALVE)                  |

### AIR CONSUMPTION

|     |     |     |     |      |      |
|-----|-----|-----|-----|------|------|
| PSI | 200 | 250 | 300 | 350  | 400  |
| CFM | 550 | 730 | 900 | 1070 | 1250 |

Note:

TOP SUB Taper Thread Connection shall be provided as per customer requirement.

Due to continuous product development specifications are subject to change with out prior notice.