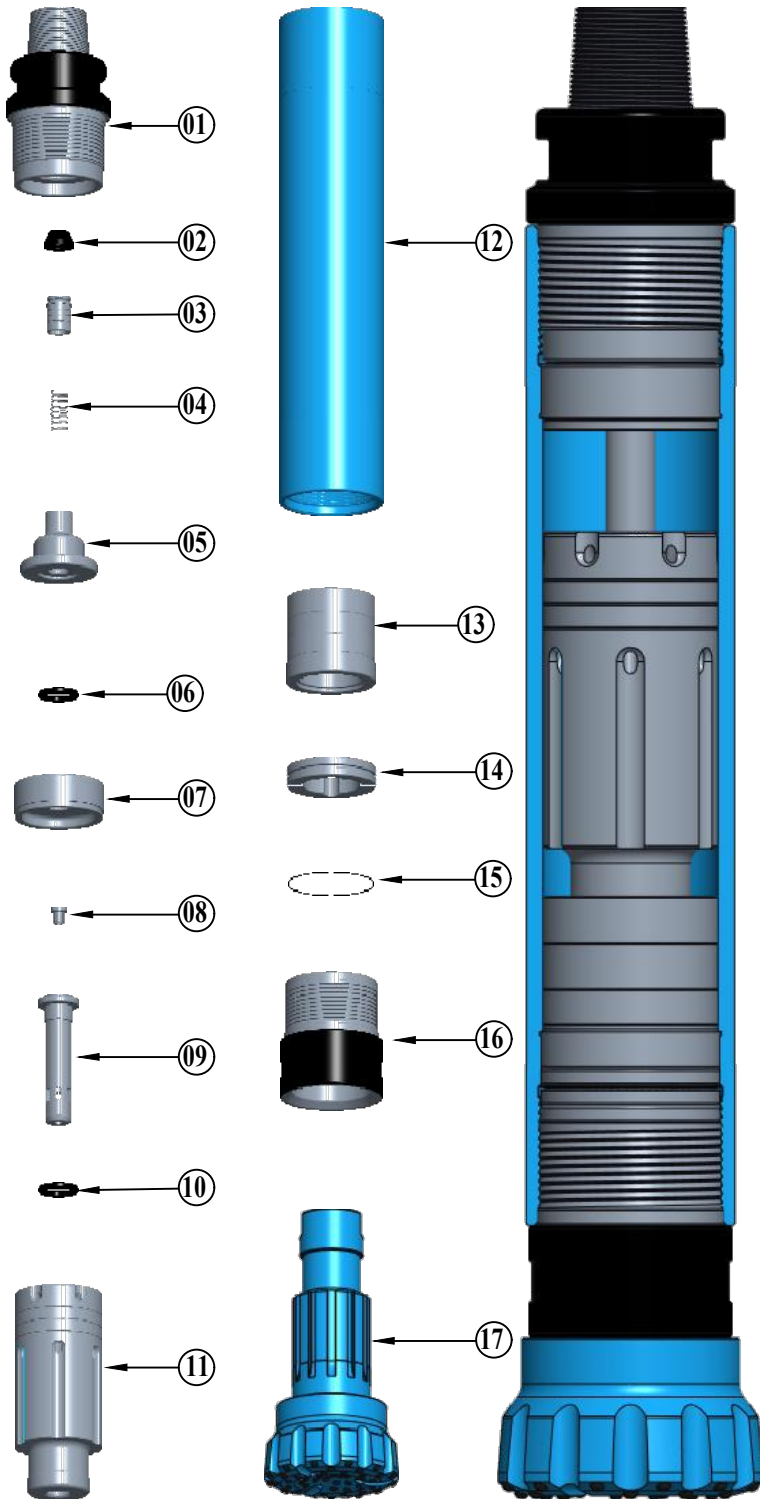




BULL ROCK DRILLS PRIVATE LIMITED

Write to us @ Plot. No. 34, IDA, Phase I, HCL Post, Cherlapally, Hyderabad-500051, Telangana, India.
Virtually introducing us @ <http://www.bullrockdrillspvtltd.co.in>

NUMA-12 DTH HAMMER EXPLODED & CROSS SECTIONAL VIEW



PART LIST

SL.NO.	DESCRIPTION	DRW.NO.
01	HAMMER COUPLER	01-B-N12-01
02	CHECK VALVE CAP	01-B-N12-02
03	CHECK VALVE	01-B-N12-03
04	SPRING	01-B-N12-04
05	AIR DISTRIBUTOR	01-B-N12-05
06	BUFFER RING	01-B-N12-06
07	CONTROL TUBE HOLDER	01-B-N12-07
08	CHOKE	01-B-N12-08
09	CONTROL TUBE	01-B-N12-09
10	BUFFER RING	01-B-N12-10
11	PISTON	01-B-N12-11
12	HAMMER CASE	01-B-N12-12
13	GUIDE BUSH	01-B-N12-13
14	B.R.RING	01-B-N12-14
15	B.R.RING 'O' RING	01-B-N12-15
16	FRONT CHUCK	01-B-N12-16
17	BUTTON BIT	NUMA-120
	BUTTON BIT	01-B-N12-24-10P-2

SPECIFICATIONS

01	HAMMER TYPE	VALVELESS
02	HAMMER DIA	Ø258.0mm
03	CYLINDER BORE	Ø216.0mm
04	STROKE	97.0mm
05	LENGTH WITH OUT BIT	1487.0mm
06	WEIGHT WITHOUT BIT	450.0 Kgs
07	END CONNECTION	6 5/8" API REG 4TPI
08	WRENCH FLAT SIZE	200.0mm
09	DRILLING RANGE	Ø305mm - Ø405mm
10	SUITABLE BUTTON BIT	NUMA-120

AIR CONSUMPTION

PSI	150	200	300	350	400
CFM	750	900	1200	1350	1500

Note: TOP SUB Taper Thread Connection shall be provided as per customer requirement.
Due to continuous product development specifications are subject to change with out prior notice.