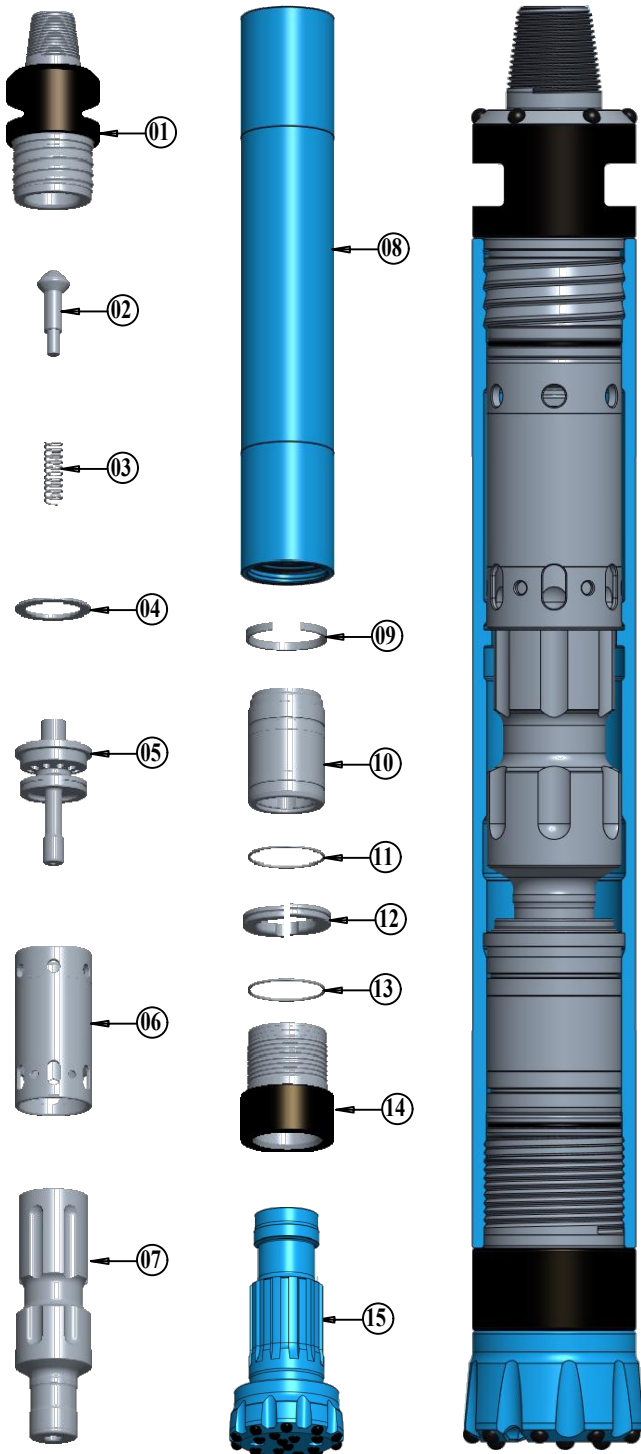


ROCKY FX-5 DTH HAMMER EXPLODED & CROSS SECTIONAL VIEW



PART LIST

SI.NO.	DESCRIPTION	PART.NO.
01	COUPLER	01-B-RF5-01
02	DART	01-B-RF5-02
03	SPRING	01-B-RF5-03
04	BUFFER RING	01-B-RF5-04
05	AIR DISTRIBUTER	01-B-RF5-05
06	LINER	01-B-RF5-06
07	PISTON	01-B-RF5-07
08	HAMMER CASE	01-B-RF5-08
09	PISTON RETAINER RING	01-B-RF5-09
10	BIT GUIDE	01-B-RF5-10
11	BIT RETAINER RING	01-B-RF5-11
12	BRR 'O' RING	01-B-RF5-12
13	FRONT CHUCK	01-B-RF5-13
14	BUTTON BIT	DHD 350 / QL-50
	HAMMER ASSEMBLY (QL-50)	01-B-RF5-14-3P-2
	HAMMER ASSEMBLY (DHD-350)	01-B-RF5-10-3P-2

SPECIFICATIONS

01	HAMMER TYPE	VALVELESS
02	HAMMER DIA	Ø125.0mm
03	CYLINDER BORE	Ø100.0mm
04	STROKE	Ø80.0mm
05	LEANTH WITH OUT BIT	1024.0mm
06	WEIGHT WITH OUT BIT	71 Kgs
07	END CONNECTION	2 ⁷ / ₈ " API IF 4TPI / 3 ¹ / ₂ " API REG 5TPI
08	WRENCH FLAT SIZE	90mm
09	DRILLING RANGE	Ø140.0mm - Ø152.0mm
10	SUITABLE BUTTON BIT	DHD 350 BIT / QL-50 (Without Foot Valve)

AIR CONSUMPTION

PSI	150	200	250	300	350
CFM	300	450	700	900	1050

NOTE:
TOP SUB TAPER THREAD CONNECTION SHALL BE PROVIDED AS PER AS PER CUSTOMER REQUIREMENT.
DUE TO CONTINUES PRODUCT DEVELOPMENT SPECIFICATIONS ARE SUBJECT TO CHANGE WITHOUT PRIOR NOTICE.