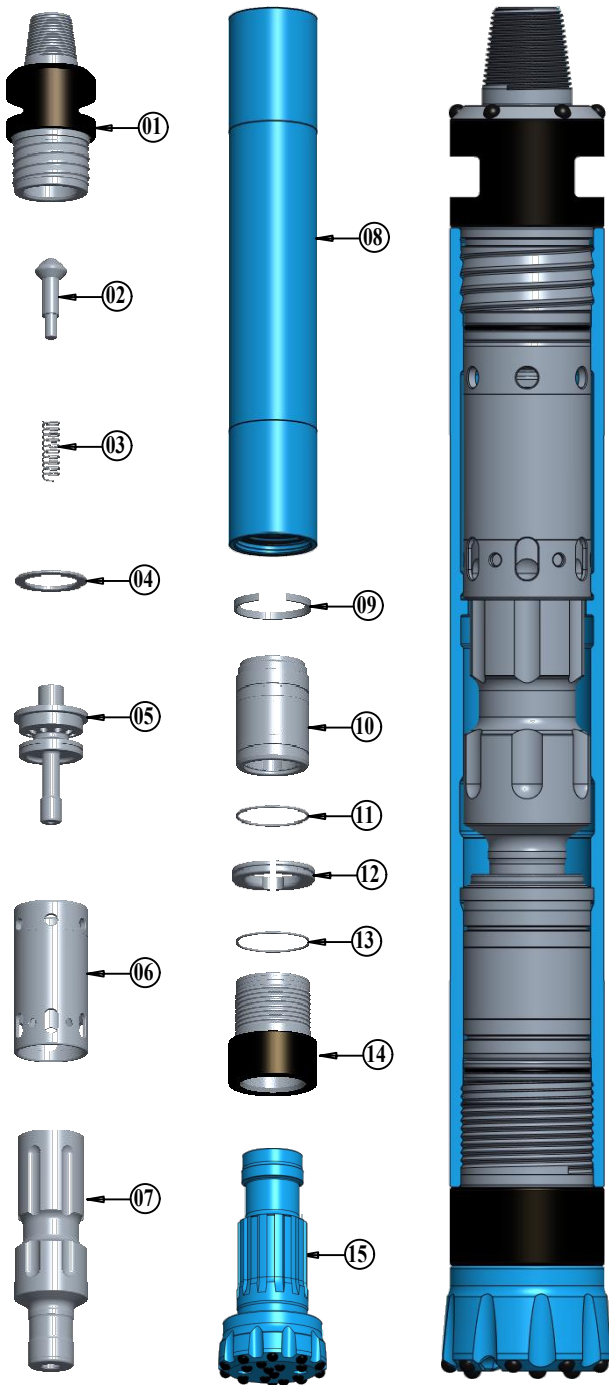




BULL ROCK DRILLS PRIVATE LIMITED

Write to us @ Plot. No. 34, IDA, Phase I, HCL Post, Cherlapally, Hyderabad-500051, Telangana, India.
Virtually introducing us @ <http://www.bullrockdrillspvtltd.co.in>

ROCKY FX-6 DTH HAMMER EXPLODED & CROSS SECTIONAL VIEW



PART LIST

SI.NO.	DESCRIPTION	DRW.NO.
01	HAMMER COUPLER	01-B-RF6-01
02	CHECK VALVE	01-B-RF6-02
03	SPRING	01-B-RF6-03
04	BUFFER RING	01-B-RF6-04
05	AIR DISTRIBUTOR	01-B-RF6-05
06	'O'RING FOR AIR DISTRIBUTOR	01-B-RF6-06
07	LINER	01-B-RF6-07
08	SNAP RING	01-B-RF6-08
09	PISTON	01-B-RF6-09
10	HAMMER CASE	01-B-RF6-10
11	PISTON RETAINER RING	01-B-RF6-11
12	GUIDE BUSH	01-B-RF6-12
13	B.R.RING	01-B-RF6-13
14	B.R.RING 'O' RING	01-B-RF6-14
15	FRONT CHUCK	01-B-RF6-15
16	BUTTON BIT	QL-60
	HAMMER ASSEMBLY(QL-60)	01-B-RF6-15-3P-1
	HAMMER ASSEMBLY(DHD-360)	01-B-RF6-11-3P-1

SPECIFICATIONS

	HAMMER TYPE	VALVELESS & IRREVERSIBLE
01	HAMMER TYPE	VALVELESS & IRREVERSIBLE
02	HAMMER DIA	Ø148.0mm
03	CYLINDER BORE	Ø122.00mm
04	STORKE	80.0mm
05	LENGTH WITH OUT BIT	1062.0.0mm
06	WEIGHT WITHOUT BIT	98.0 Kgs
07	END CONNECTION	2 1/2" API IF 4TPI / 3 1/2" API REG 5TPI
08	WRENCH FLAT SIZE	90.0mm
09	DRILLING RANGE	Ø165.0mm - Ø202.0mm
10	SUITABLE BUTTON BIT	DHD-360 / QL-60 (Withoutfoot valve)

AIR CONSUMPTION

PSI	150	250	350
CFM	343	659	972

Note: TOP SUB Taper Thread Connection shall be provided as per customer requirement.
Due to continuous product development specifications are subject to change with out prior notice.