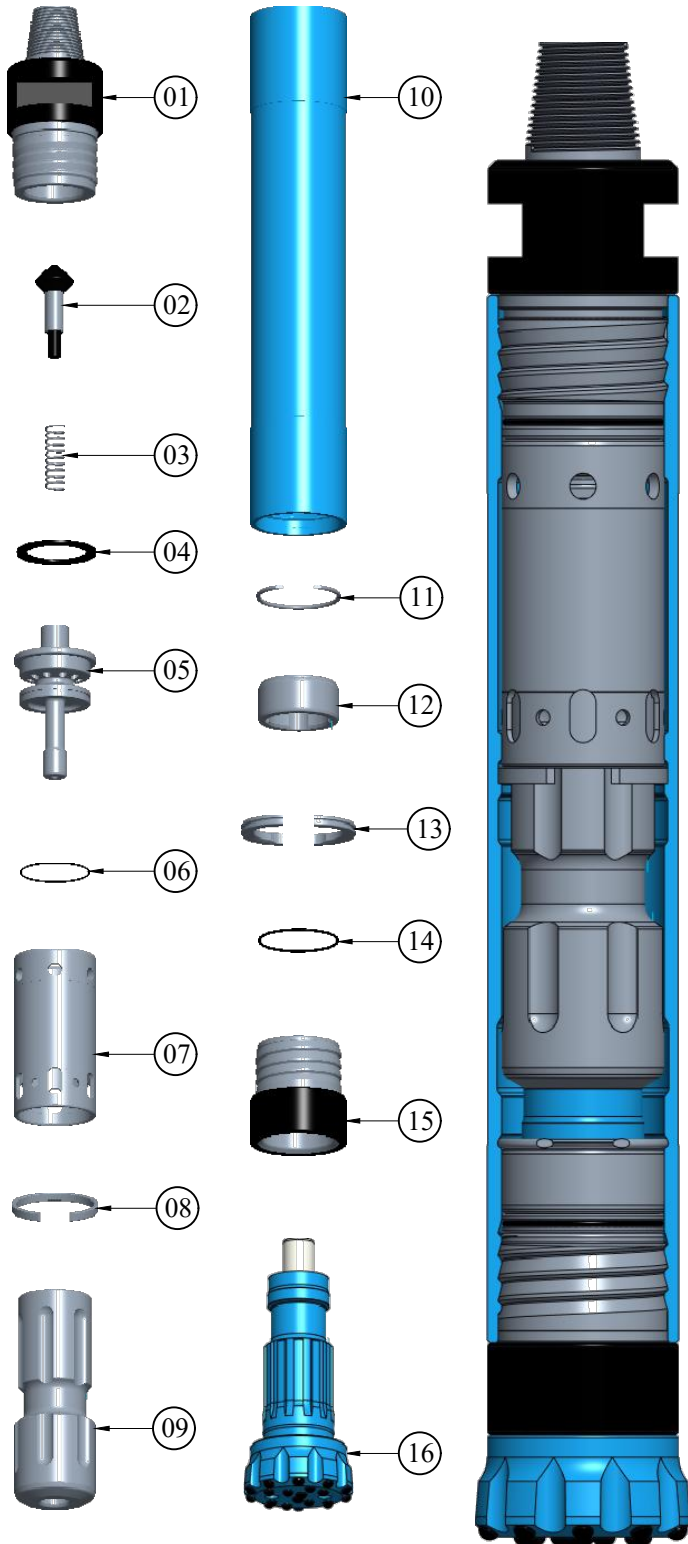


ROCKY-6 DTH HAMMER EXPLODED & CROSS SECTIONAL VIEW



PART LIST

SI.NO.	DESCRIPTION	DRW.NO.
01	HAMMER COUPLER	01-B-R6-01
02	CHECK VALVE	01-B-R6-02
03	SPRING	01-B-R6-03
04	BUFFER RING	01-B-R6-04
05	AIR DISTRIBUTOR	01-B-R6-05
06	'O'RING FOR AIR DISTRIBUTOR	01-B-R6-06
07	LINER	01-B-R6-07
08	SNAP RING	01-B-R6-08
09	PISTON	01-B-R6-09
10	HAMMER CASE	01-B-R6-10
11	PISTON RETAINER RING	01-B-R6-11
12	GUIDE BUSH	01-B-R6-12
13	B.R.RING	01-B-R6-13
14	B.R.RING 'O' RING	01-B-R6-14
15	FRONT CHUCK	01-B-R6-15
16	BUTTON BIT	QL-60
	HAMMER ASSEMBLY(QL-60)	01-B-R6-15-3P-1
	HAMMER ASSEMBLY(SD-6)	01-B-R6-20-3P-1
	HAMMER ASSEMBLY(DHD-360)	01-B-R6-11-3P-1

SPECIFICATIONS

01	HAMMER TYPE	VALVELESS
02	HAMMER DIA	Ø148.0 mm
03	CYLINDER BORE	Ø122.00 mm
04	STROKE	92.0mm
05	LENGTH WITH OUT BIT	999.0mm
06	WEIGHT WITHOUT BIT	92.0 Kgs Approx.
07	END CONNECTION	2 7/8 API IF 4TPI / 3 1/2 API REG 5TPI
08	WRENCH FLAT SIZE	A/F 90.0mm / 40.0 mm Wide
09	DRILLING RANGE	Ø165.0mm - Ø202.0mm
10	SUITABLE BUTTON BIT	QL-60 (With Foot Valve)

AIR CONSUMPTION

PSI	200	250	300	350	400
CFM	550	730	900	1070	1250

NOTE:

TOP SUB TAPER THREAD CONNECTION SHALL BE PROVIDED AS PER AS PER CUSTOMER REQUIREMENT.

DUE TO CONTINUES PRODUCT DEVELOPMENT SPECIFICATIONS ARE SUBJECT TO CHANGE WITHOUT PRIOR NOTICE.